

LIFE ETERNAL TRUST AUSTRALIA



Accounts Presentation for period Jul 21 - Dec 22

BACKGROUND INFORMATION

- LETA is a non-profit charitable organisation.
- LETA is registered as a tax-exempt charity
- LETA is still working on tax-deductible status (DGR Status)
- Australian Tax Office (ATO) monitors compliance with tax laws including goods services tax (GST)
- LETA has complied with all requirements for the last 17 years

REPORTING REQUIREMENTS

Australian Charities & Not for Profits Commission (ACNC)

- LETA is a registered charity with the ACNC
- Must have financial statements audited every year for ACNC purposes
- Must provide our annual Information Statement to be published on the ACNC register
- All financial information including our charitable activities is publicly available on the ACNC website

PREPARATION OF ACCOUNTS

- Majority of revenue is derived from donations
- All expenses relate to Sahaja Yoga promotions, seminars and property maintenance
- All payments are authorised and endorsed by the Trustees and relevant state councillors
- The accounts team compiles all the information, checks the accuracy of information and prepares the annual financial reports for submission to ACNC
- The accounts team provide all relevant information to the auditor at end of financial year

STEPS INVOLVED

Category	Steps
Invoices/ Vouchers	<ul style="list-style-type: none">• Collecting all invoices from the each of the states• Preparing vouchers for all invoices• Checking ABN number and GST registration• Verifying and checking GST amount if applicable• Follow up on vouchers with missing invoices• All vouchers are endorsed by Trustees and Councillors

Category	Steps
Xero Data Entry	<ul style="list-style-type: none">• Enter all invoices in Accounting System• Checking accounting entries with Bank Statements• Prepare and reconcile bank reconciliation statements
Record-keeping	<ul style="list-style-type: none">• Filling of all the invoices• Prepare meeting minutes for all disbursements
Lodgement	<ul style="list-style-type: none">• Compile all information for lodgement of quarterly BAS.

MAIN EXPENSES

Property Maintenance	<ul style="list-style-type: none">• Rates and utilities – electricity, gas & water and insurance• Repairs, all material needed for repairs, general and garden maintenance for all Sahaja Yoga properties
Venue Hire	<ul style="list-style-type: none">• Room/hall hire for public programs• Stall hire for festivals, markets, parks etc.
Sahaja Yoga Promotions	<ul style="list-style-type: none">• Advertising online and in newspapers• Printing/copying of leaflets, brochures and materials for public programs• Telephone and internet

MAIN EXPENSES

Seminar Expenses

- Puja costs, cleaning and rubbish removal, all expenses in connection with preparation for programs, flowers, candles, picture framing , food, etc.

Accounting/ Auditing

- Accounting costs – BAS preparation
- Bank fees

Legal/ Insurance

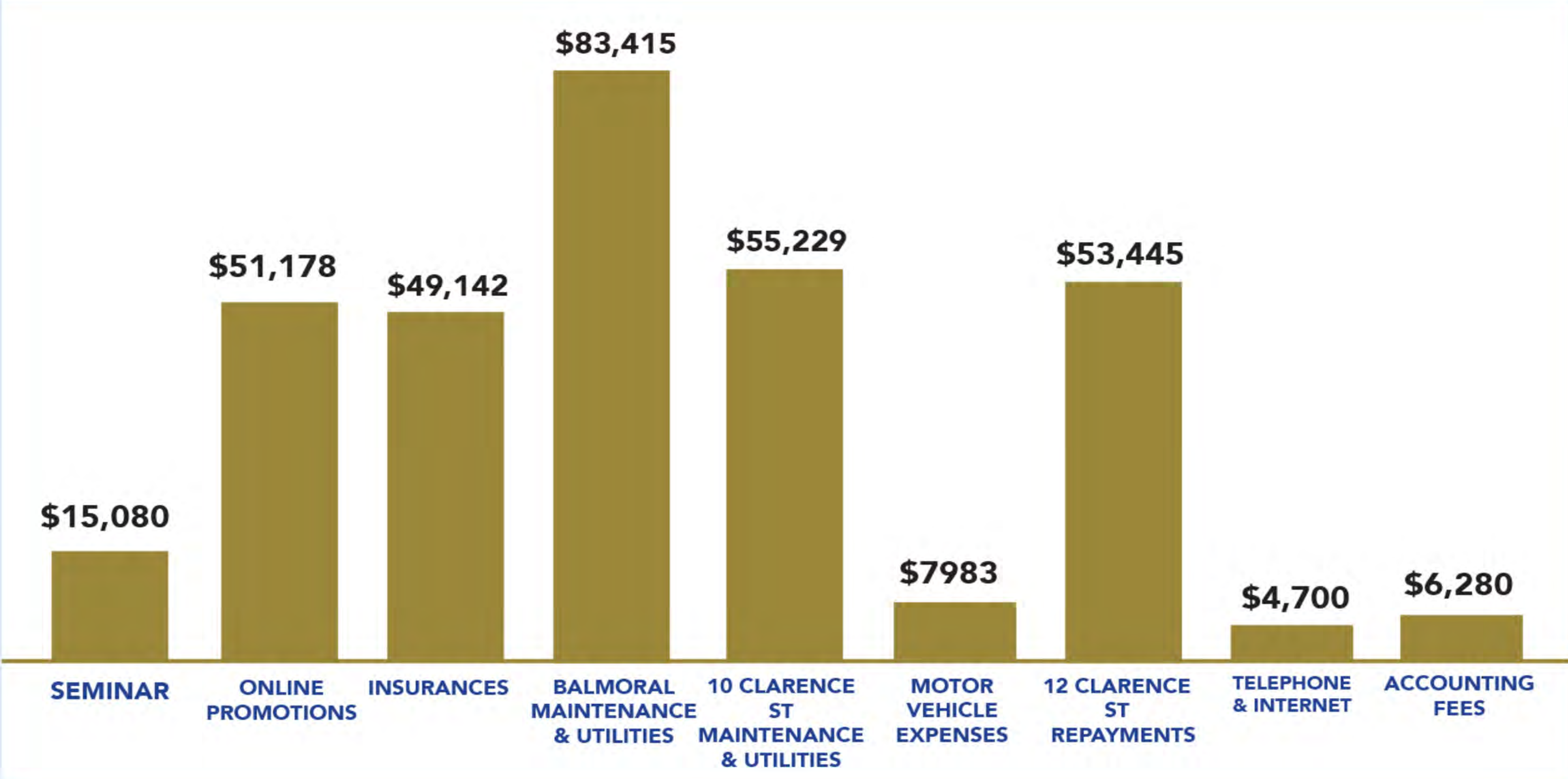
- Legal advice on relevant matters and legal compliances
- Property/vehicle Insurances

LETA REVENUE

Majority of Revenue was derived from voluntary donations

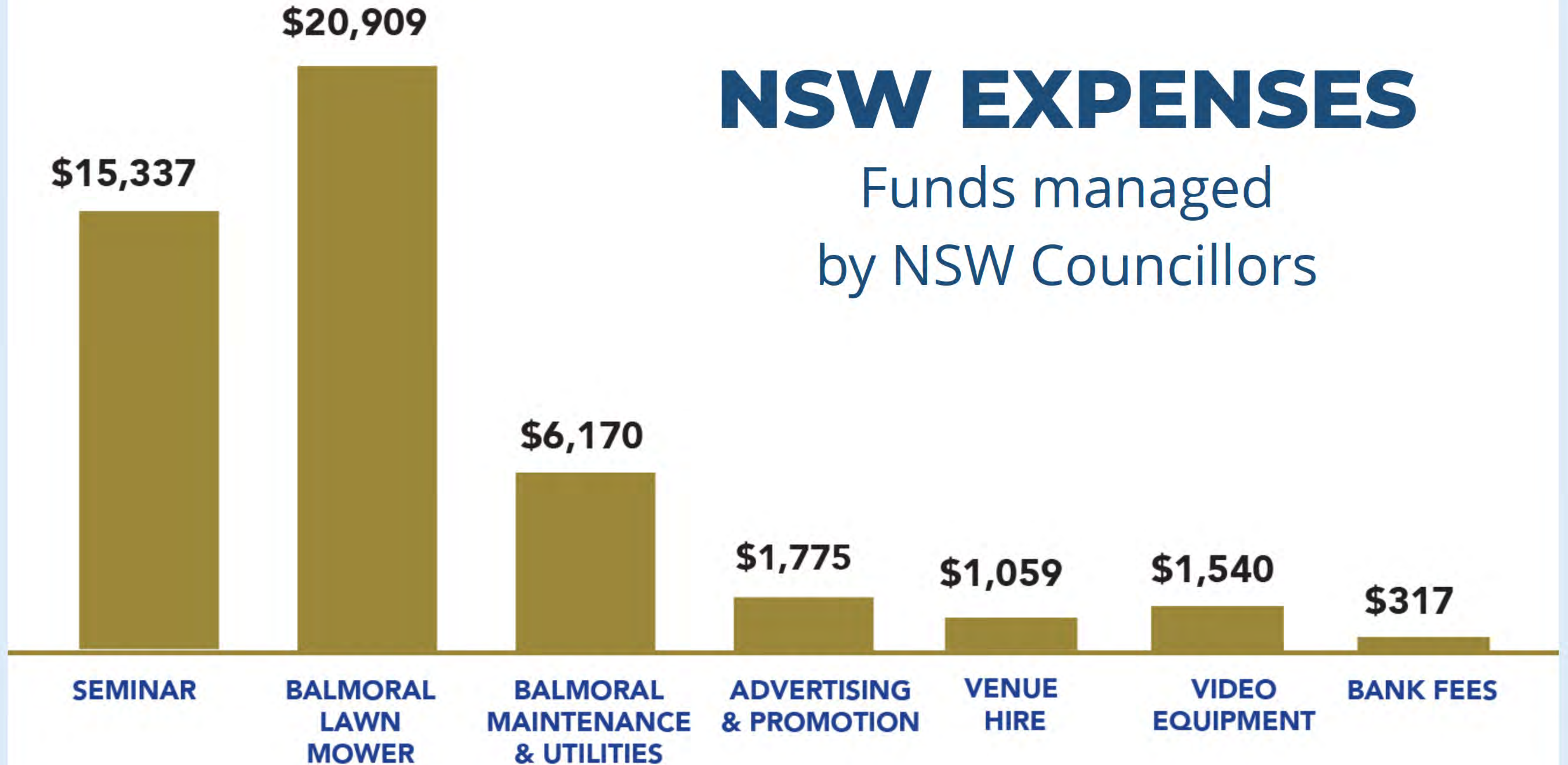


NATIONAL EXPENSES



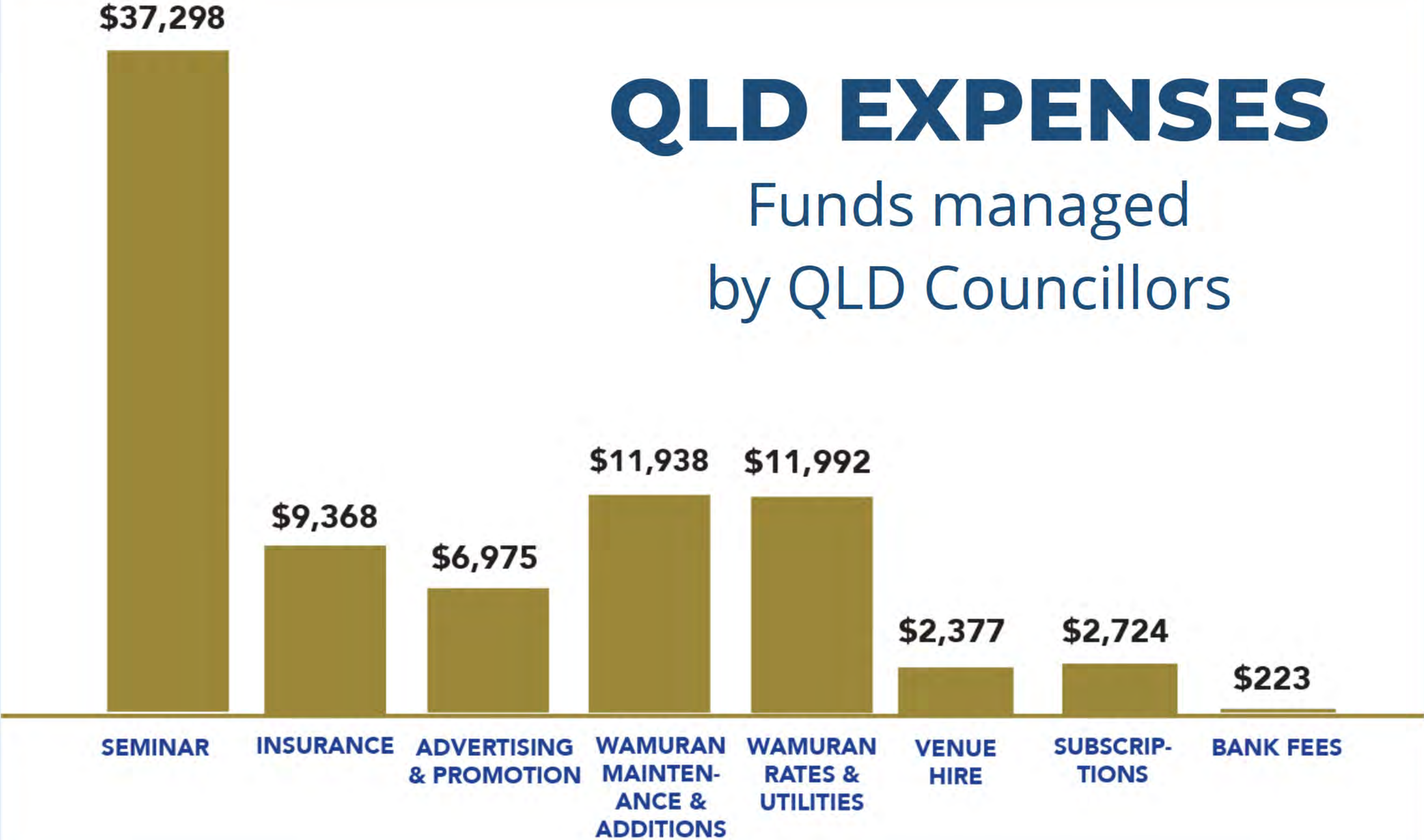
NSW EXPENSES

Funds managed
by NSW Councillors



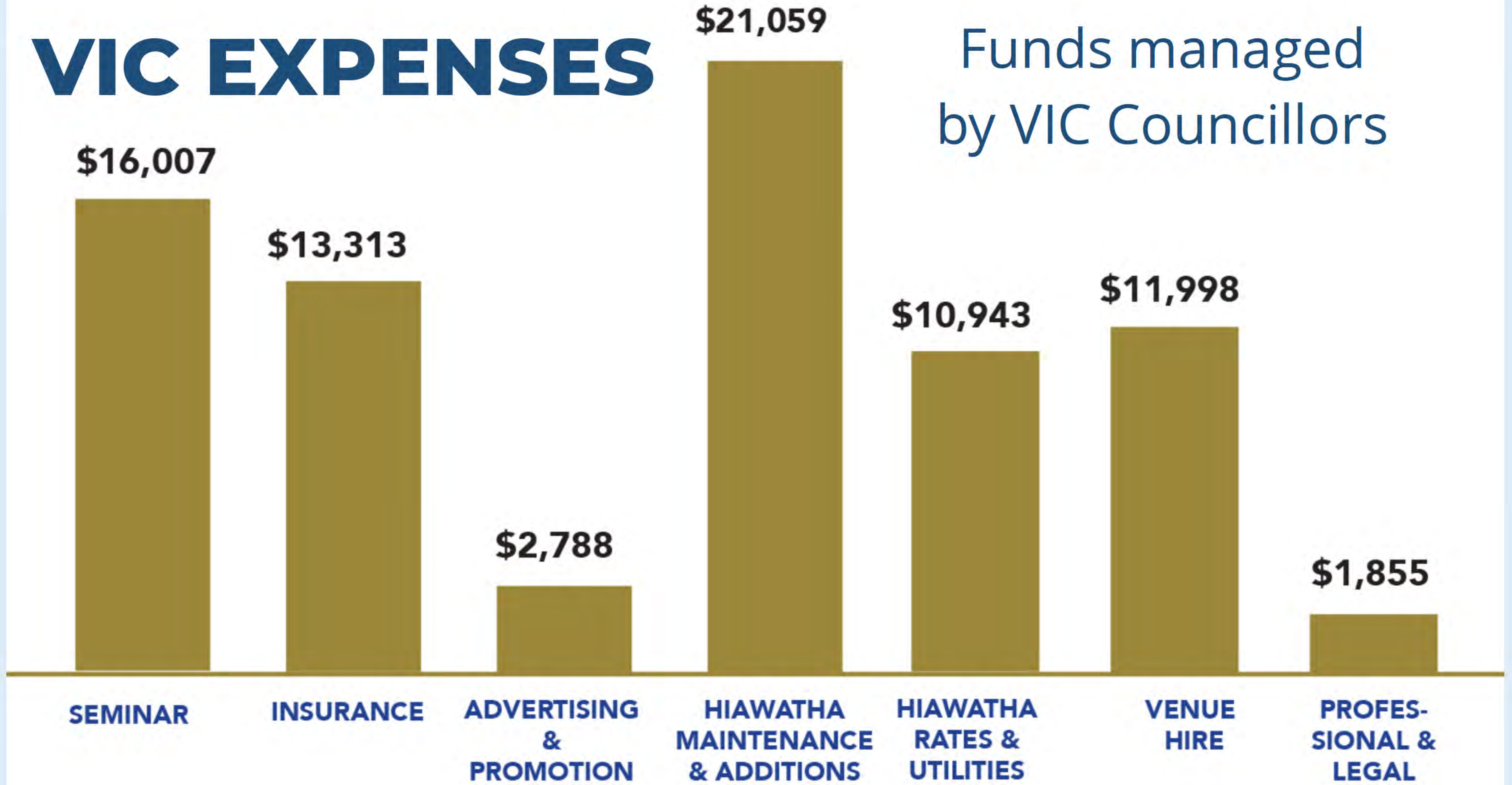
QLD EXPENSES

Funds managed
by QLD Councillors



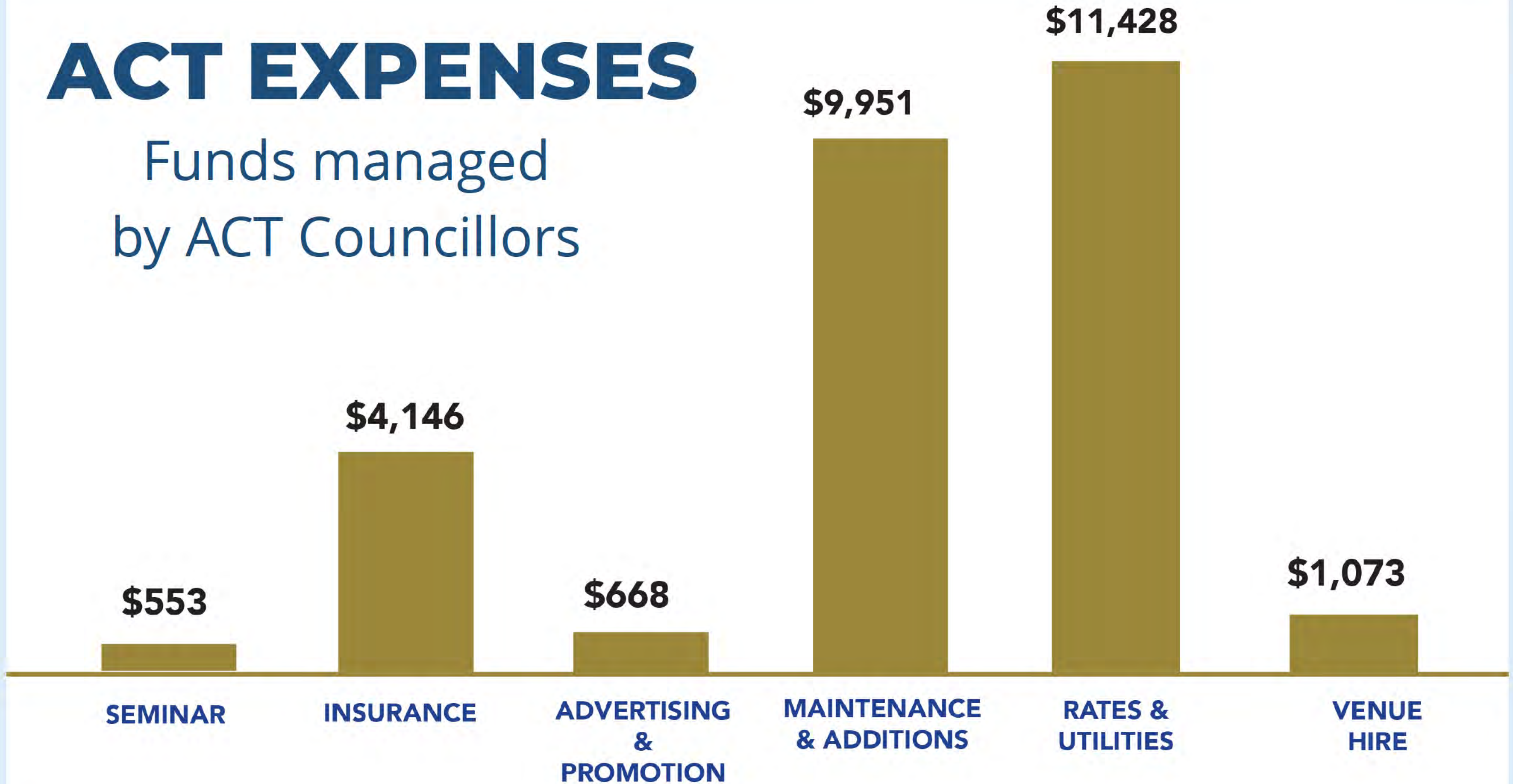
VIC EXPENSES

Funds managed
by VIC Councillors



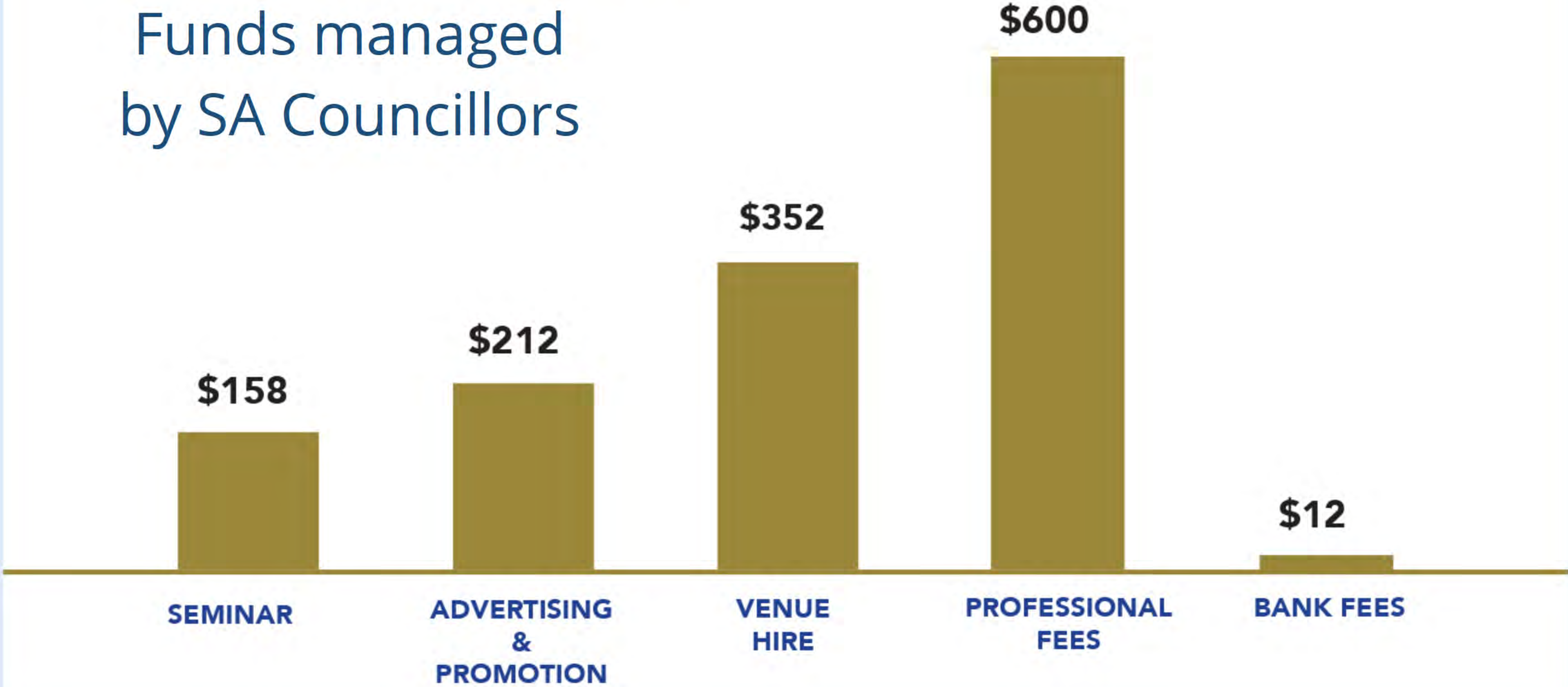
ACT EXPENSES

Funds managed
by ACT Councillors

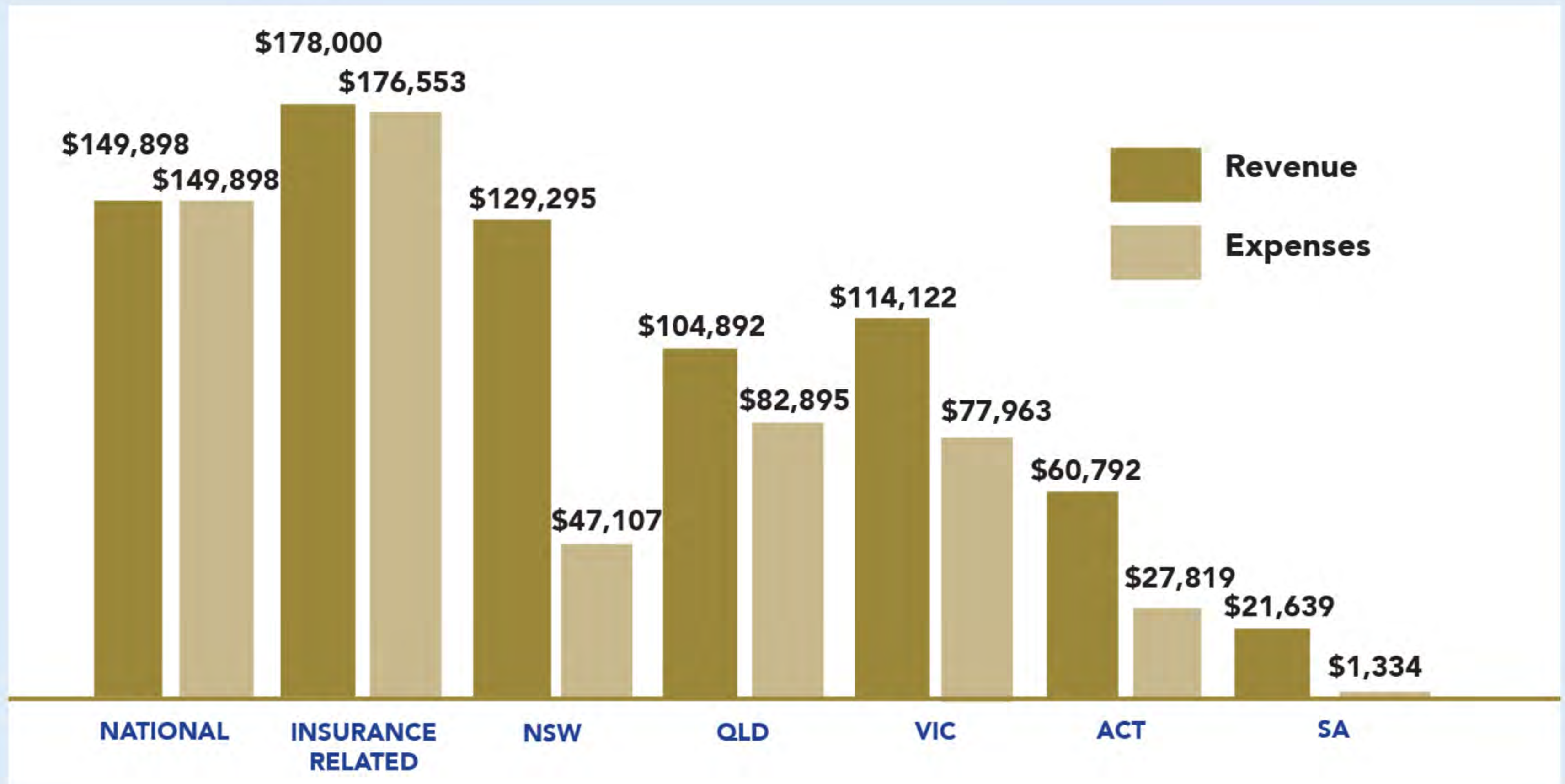


SA EXPENSES

Funds managed
by SA Councillors



EXPENSES & REVENUE BY STATE



SCHOOL PROJECT

Managed by Life Eternal Education Board

Donor's	Receipts	Expenses	Total Invoice Payments
NSW	\$22,000	Environmental Planning Consultant	\$8,800
VIC	\$8,000	Legal Advice	\$6955.48
WA	\$7,708	Wingacarribee Council - PP	\$5250
ACT	\$6,008	Research & Survey	\$3,316.50
QLD	\$3008	Soil & Site Hazard assessment	\$12,212
SA	\$2,608	Policy Connect	\$11,290
Individual donations	\$10,000	Ecological Assessment	\$16,616.02
TOTAL	\$59,332		\$64,440

NATIONAL ACCOUNTS/FINANCE TEAM

Internal Support Team

NSW	Radhika Richardson Brett Coleman Judy Lenartas Shikha Rapyal Savita Chhabra
QLD	Debbie Miller Brett Johnson
VIC	Phil Noone Chris Clear
SA	Sangita Noone
ACT	Emmanuel Ametowanou Surender Vasudeva

External Support Team

Legal	Hunt & Hunt
Professional Support & Advice	G J Callaghan & Co
Auditors	Meena Sharma FCPA, Accounting Guru

DONATIONS

Life Eternal Trust - National Projects Account

BSB: 012 245 Account Number: 349153587

Life Eternal Trust - NSW Account

BSB: 012 245 Account Number: 221767344

Cheques to be made out to Life Eternal Trust Australia
PO Box 154 Burwood NSW

Other States - Please see finance team for details

A big thank you to all the Sahaja Yogis for
their generosity and for recognising the
importance of spreading
HH Shri Mataj's all pervading love!



THANK YOU